

Moonrise



contact: Moonrise@Nordhavn-Yachts.com
www.Nordhavn-Yachts.com

A wide-angle, high-angle shot from the deck of a white Nordhavn boat, looking forward over the horizon. The boat's deck is white with a tan seat and various equipment. The ocean is a deep, clear blue, and the sky is a lighter blue with a few scattered white clouds. The text "You could be there. This Nordhavn takes you everywhere." is overlaid in white on the water.

You could be there. This Nordhavn takes you everywhere.

Highlights

Popular and most wanted version with:

- Flybridge
- 2 Staterooms
- Stack & Crane
- Articulating rudder
- Dry exhaust with keel cooler
- 3x helms
- 2 tender
- Waxed and detailed 09/2017





Nordhavn 47 Moonrise was commissioned in Florida late 2003. She is truly loaded with all that is required for ocean cruising. She cruised the West Coast, Alaska and the whole Caribbean.

She is powered by the economical 174 HP, 6 cylinder, most wanted without electronic LP 886 T Luger engine and complimented by an extensive array of upgraded equipment including: Flybridge, FRP Stack, 1500 lb polished Stainless Steel Davit, two (!) Tenders, 14' Rendova Tender w. 50 HP Honda (The largest dinghy available to fit aboard a N47) and a small tender with 2HP Honda, Articulating rudder (no Sternthruster needed), 3x Helmstands, Micro Commander, ABT/TRAC Stabilizers, 16 kw Generator, 60,000 BTU A/C and Kahlenberg Horn, Carlisle & Finch search light, and much more.

Whether you are planning an ambitious around-the-world- cruise, or simply desire a capable vessel for coastal cruising with family or friends „Moonrise“ is built to get you safely and comfortably to your destination. The owners have professionally maintained all equipment and vessel systems throughout ownership. Moonrise has been loved and been wonderful taken care of and is being sold by her second owner.

Pilothouse



Pilothouse



Inside Moonrise



Inside Moonrise



Inside Moonrise



Moonrise Engine Room



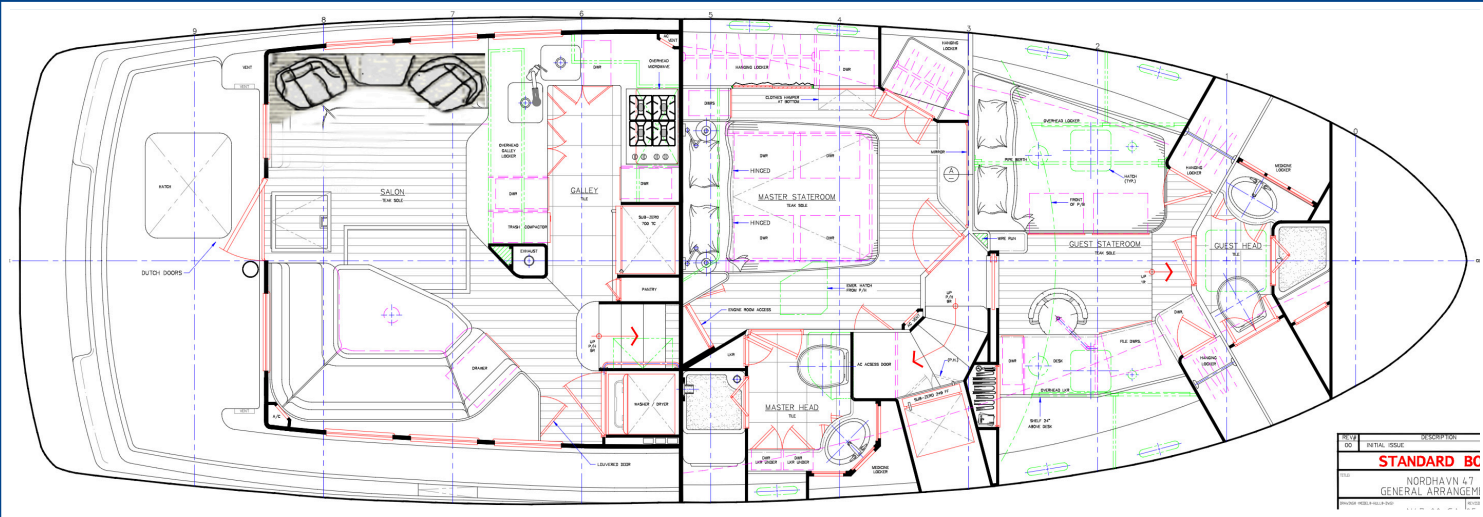
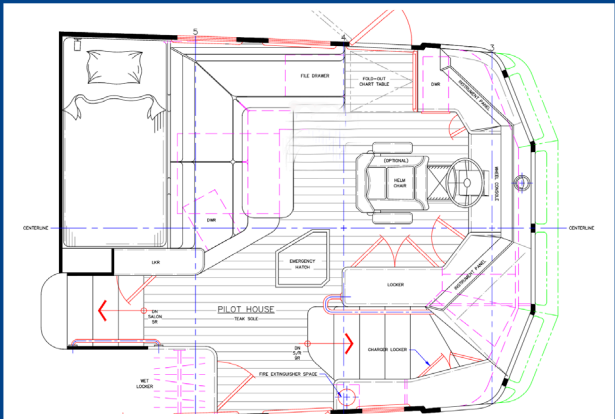
Outside Moonrise



Outside Moonrise



Drawings



REV	DATE	BY	CHK
01			
STANDARD BC			
NORSHAW 4.7			
GENERAL ARRANGEMENT			
SCALE: 1:100			

Moonrise Tender



Moonrise Specs

Specs:

Builder: PAE
Designer: Jeff Leishman
Hull Shape: Displacement

Dimensions:

LOA: 50 ft 0 in
Beam: 16 ft 1 in
LWL: 43 ft 4 in
Minimum Draft: 5 ft 8 in
Maximum Draft: 6 ft 0 in
Displacement: 85000 lbs
Ballast: 7400 lbs

Engines:

Engine 1:
Engine Brand: Luger
Year Built: 2003
Engine Model: LP 668 T
Engine Type: Inboard
Engine/Fuel Type: Diesel
Engine Hours: 5.480* (02/2018)
Drive Type: Direct Drive
Engine(s) Total Power: 174 HP

Engine 2:
Engine Brand: Yanmar
Year Built: 2003
Engine Model: 3JH3E
Engine Type: Inboard
Engine/Fuel Type: Diesel
Engine Hours: 90.0 (02/2018)
Drive Type: Direct Drive
Engine(s) Total Power: 35.5 HP

Tanks

Fresh Water Tanks: 1 Fiberglass (400 Gallons)
Fuel Tanks: Fiberglass (1470 Gallons)
Two (2) Holding Tanks: Fiberglass (each 120 Gallons)

Accommodations:

Number of double berths: 2
Number of cabins: 2
Number of heads: 2

Layout:

- Flybridge, stack and davit
- Wide body to port (see drawing)
- Teak interior
- Two staterooms
- Diamond Seaglaze dutch-style (2 part) doors for saloon and pilothouse
- Upgraded upholstery to ultra-leather in saloon and pilothouse
- Extensive custom coverings on all windows - 90% UV protection
- Teak floors throughout except for heads
- Custom tiled flooring in heads
- Two heads with full standing-height stall showers and granite counters
- Desk and teak cabinets in forward stateroom
- Custom pull out single pipe berth over forward guest cabin double berth

Moonrise Specs

Galley & Interior:

- Subzero #700 refrigerator with freezer drawers and ice maker
- Subzero #249 extra freezer (companionway stairs)
- Thermador gas stove and oven range/convection oven
- GE microwave oven/convection oven
- Miele 18" dishwasher with stainless steel front panel
- Broan trash compactor
- Xintex 5-2A propane fume detector
- Granite countertops and backsplash in galley
- Double stainless steel sink
- Galley sink and dishwasher can be discharged to gray water tank, or directly overboard
- 2 sliding storage doors behind stove cook top
- Upgraded ASKO washer
- Upgraded ASKO dryer
- Two Recliner Chairs - Stressless
- Custom made cabinet
- Mariner MAR Custom Hi-Lo Marine Teak salon table in high gloss
- Salon settee covered with Ultra-Leather
- HunterDouglas blinds on salon windows
- Polished stainless opening ports throughout the boat with screens and stainless privacy and storm shields
- Teak handrails in the salon
- File drawer, two large chart drawers and wet hanging locker with drain for foul weather gear in pilothouse
- Stainless handrail installed on the lower staircase
- Teak overlay on engine room door in owner's stateroom
- Custom mattress in owner's stateroom
- Custom mattress in guest room
- Guest stateroom work desk and teak cabinets
- Book shelf above the work desk
- Guest stateroom desk chair in Ultra-Leather
- Generous hanging and cedar lined storage lockers

Machinery & Equipment:

- Luggar LP886T -174 HP diesel with 5,480* hours. Separate Lifeline 8D starting battery - NEW 2017
- Yanmar 35.5 HP wing engine model 3JH3E with 90 hours w/separate 10 gal day tank - with Gori folding 3-blades prop. Lifeline 4D starting battery shared with genset NEW 2017
- Stainless steel main engine guard rails with working top and bench vise
- ABT Trac hydraulic stabilizers model 220 w/7.5 sq. ft. fins w/ keel cooler - fully rebuild 2017
- Sea Fire engine room fire suppression system with auto engine, generator and blower shutdowns and pull cable; Alarm and engine shut down override switch
- Sea Fire suppression system in the lazarette; Pull cable and alarm
- Side Power bow thruster NEW 2017
- Five (5) Marine Air Reverse Cycle Air Conditioners, with separate controls in each room (provide air conditioning or heating)
- Hydraulic wheel steering
- Emergency tiller steering
- Lightning ground system with copper plate on hull
- Spurs line cutter on main prop shaft

Pilothouse & Electronics:

- Stidd helm chair
- Microcommander Engine Control
- Simrad AP 20 Autopilot
- Simard FU 50 Follow U
- Two (2) Simrad Autopilot J300X Junction Boxes with two RPU300 pumps
- Two (2) x Furuno Navnet Radar/Plotter/Sounder/Fishfinder/ CCTV for camera

Moonrise Specs

- 12V Marine PC (Win7) & Nobeltec Chart Software
- Two (2) CCTV cameras; engine room and aft deck
- VEI Monitor
- Furuno Satellite Compass SC 50
- Furuno AIS FA-150 - Type A - full transmit and receive
- B&G wind direction display
- B&G H-1000 display for second depth sounder, windspeed, sea temperature & boatspeed
- ABT Trac Touch Display
- Floscan
- Carlisle & Finch Commercial Xenon 200 W Arc Search Light (15 Mio. Beam Candlepower)
- Village Marine Remote Control for watermaker
- ICOM IC-M602 VHF
- ICOM Commandmic from ICOM IC-M602 Flybridge
- ICOM IC-M802 SSB single side band with automatic tuner
- Iridium Satellite Telephone
- WiFi booster system with antenna and software
- Router - for shipwide internet through the WiFi Multiplier
- Intercom in every room, also engine room connected with shore, GSM and satellite phone
- Airhorn
- Additional Kahlenberg air horn with automatic foghorn operation
- Remote for Bowthruster
- Remote for Maxwell 3500 Anchorwinch
- Ritchie Compass
- XM Satellite Weather Blackbox (Sirius subscription)
- High Water Alarm
- Sea Fire Alarms
- Racor Water Alarm
- Bilge Counter
- Sea Me radar reflector
- Digital Electrical Meter (V/A/Hz)for Shorepower

- Digital Electrical Meter (V/A/Hz)for Generator
- Link Pro battery condition gauge
- 4 red overhead lights
- Ultra-leather on settee and pilot berth

Flybridge:

- Microcommander Engine Control
- Furuno Navnet color chart plotter/fish finder/GPS display on a Navpot
- Simrad AP22 Autopilot
- Simrad FU 150 Follow U
- Maxwell Anchorwinch control
- Bow thruster control
- Carlisle & Finch Search Light control
- ICOM IC-M602
- Horn control
- ABT Trac Stabilizer control
- 12V Plug
- 110 V Plug
- Ritchie Compass

Cockpit:

- 3rd helm control station
- Microcommander Engine Control
- Simrad FU-50 Follow U
- Remote control Bow Thruster
- Remote control Anchor Winch
- Socket for Command Mic - (M602 Pilothouse)
- 12V Plug
- 110V Plug

Moonrise Specs

Electrical System:

- Six (6) AGM Lifeline 8D NEW 2016
- One (1) AGM Lifeline 8D for Main Engine - NEW 2017
- One (1) AGM Lifeline 4D for Gen/Wing Engine - NEW 2017
- 16 KW Northern Lights generator with sound enclosure (6.355* hours 02/2018)
- Gen-Separator for quiet muffler
- Lightning ground protection system
- Two (2) - 50 Amp shore power cords (50ft & 60ft NEW 2017)
- One (1) - 30 Amp shore power cord
- Trace 2,500-watt inverter/charger
- Two (2) Mastervolt chargers
- Inverter bypass switch
- 50 and 30 amp shore power inlets
- TV/cable/phone w/ exterior inlets
- 12V outlet in pilothouse
- Large case 175 amp engine belt driven alternator
- Galvanic isolation
- Olsun Type 4X Class 180 isolation transformer
- Charles Smart Boost 50 Boosting Transformer
- PAE custom electrical distribution panel
- Color-coded wiring

Plumbing:

- 400 gallons of fresh water in baffled fiberglass tank
- Village Marine PW 800 GPD Watermaker (40 gph in the Caribbean) - NEW MEMBRANES 2015
- Raritan water heater
- Upgraded AC house water pump, Headhunter Mach 5
- 12 V Jabsco waterpump
- Sanitron UV Sterilizer - NEW UV Lamp and Service 2017
- Fresh water wash down on bow, stern, tender deck and engine room

- Scandvik hot/cold cockpit shower NEW 2017
- Two Raritan heads with fresh water
- Sealand tank watch 4 monitoring system
- Electric grey and black water tank discharge pump
- Manual grey and black water tank discharge pumps
- Charcoal filter on holding tank vent
- Grohe faucets
- 120 gallon black water holding tank
- 110 gallon grey water tank
- Gulper electric bilge pump
- Rule 3700 high water electric pump w/ audible alarm
- Edson manual bilge pump
- NEW A/C Pump 2017
- 1,400 gallons of fuel in two fiberglass tanks with sight gauges
- Gravity feed 70-gallon fuel supply tank with calibration fuel burn gauge & water contamination audible sensor
- Dual Racor fuel filters - rebuild 2017
- Transfer/polishing pump with timer on fuel system

Hull & Deck:

- Dry exhaust with keel cooler
- Two (2) Todd helm chairs on flybridge
- Retractable canvas awning on flybridge
- Flopper stopper system (port)
- Carlisle & Finch Commercial Xenon 200 W Arc Search Light (15 Mio. Beam Candlepower)
- Hailer
- Horn
- Additional Kahlenberg air horn
- FRP Dry Stack w. dual radar arms
- Retractable steps on FRP stack
- Halogen lights on deck and over flybridge

Moonrise Specs

- Custom stainless hand rails (Portuguese bridge, port and starboard doors, starboard stairway, starboard at pilothouse level, starboard at salon level, port and starboard swim platform, port and starboard chin-up bars in cockpit, port side of cockpit)
- Custom stainless steel life raft rack
- Winslow 60SLO - 6 Persons life raft with Pelican Case
- 1500 lbs Aritex Stainless steel Davit
- Dock box mounted on upper deck
- Maxwell 3500 Anchor winch - rebuild 2017, with chain wheel NEW 2017
- Chain stopper
- 420 ft of 3/8 G4 HT Chain - NEW 2017
- Anchor 1: Rocna 121lb 55kg anchor
- Anchor 2: 90 lb Spade anchor with 50 feet 3/8 chain and 400ft nylon rode
- Anchor 3: Fortress FX-55 in bag
- Anchor securing block
- Freeman hatch to drained anchor locker
- Line holders in anchor locker
- Bow Eye (Tow Ring)
- Two (2) folding stainless steel fender brackets
- Bonding system with two copper bars on the hull
- Three (3) Aluminium LPG bottles
- Hot/Cold Cockpit shower NEW 2017
- Fresh water deck wash down bow, cockpit, tender deck, and engine room
- Salt water wash down on bow
- Storm plates
- Snap on window covers/screens for all windows for UV and sun protection
- (5) Large dock fenders
- Spurs line cutters

Safety:

- Winslow 60SLO - 6 Persons life raft with Pelican Case
- EPIRB 406 MHz
- (2) Automatic life vests
- (6) Offshore life vests
- (2) life rings
- Flares, blankets, day signal, first aid kit and more
- Sea Fire Automatic Fire Extinguishing system in engine room with automatic engine, generator and blower shut downs
- Sea Fire Automatic Fire Extinguishing system in Lazarette
- Emergency escape hatch from master stateroom

Factory Upgrades and Owner Enhancements:

- White painted engine room
- Nine additional stainless steel handrails through out deck areas
- Polished stainless opening ports throughout the boat with screens and stainless privacy and storm shields
- ABT TRAC 220 stabilizing system - REBUILD 2017
- Side Power Bow Thruster - NEW 2017
- Articulating rudder with doubled hydraulic steering cylinders, instead of a stern thruster
- Bow, stern, cockpit and upper deck fresh water wash down
- Bow salt water wash down
- Four (4) Cockpit Outlets: 50 Amp Shore Power, Air-condition, 120V Shore, Phone & TV
- Four (4) Bow Outlets: 50 Amp Shore Power, Air-condition, 120V Shore, Phone & TV
- 420 ft Anchor chain 3/8, G4 HT NEW 2017
- Chain wheel windlass 3/8 NEW 2017
- Anchor chain stopper
- Reverso electric oil change unit, plumbed directly to Main, Transmission, Wing and Generator

Moonrise Specs

- Ultra Leather upholstery throughout
- 60,000 BTU Air Conditioning/Reverse cycle heat with five zones and digital controls
- Xantrex 2.500 watt inverter and two (2) additional Mastervolt Chargers
- Bow eye
- Extra propane tank (3 in total)

Tender 1:

- 14,3 ft. Rendova 430
- Fiberglass hull with a flotation collar
- 50 HP Honda
- Furuno GP 1870 F with Caribbean charts on a Navpod
- ICOM VHF with external antenna
- Stainless steel arch and water ski eye
- Bimini
- Surround stainless steel grab rails
- 4 step stainless steel folding bathing ladder mid-ships that doubles as the frame for the mid-ships seating

Tender 2:

- Avon RIB
- Small Tender with 2 HP 4 stroke air-cooled Honda outboard

Not in service but on the boat:

- Hurricane Heater system
- KVH Trac Vision G4
- KVH Tracphone F33
- Sharp Television
- Bose Sound System
- Passarelle

Extra package - worth 20.000 \$ only 6.900 \$:

- All Tools 4.500
- Full Fastener Kit 1.070
- Brownie - FreeDiver (2 person) 2.990
- 2 New Kettler chairs & cushions 1.060
- Teak table 490
- Brandnew Magma Infrared Grill, Cover & supplies 834
- Fishing gear (3 fishing rods with Shimano reels and cutting table) 1.800
- Mobile underwater fishing light 500
- Four (4) Eartec Simultalk 24G incl. headsets, case & covers 640
- Handheld VHF 85 Westmarine 149
- Handheld Icom Floating VHF 189
- Philips Defibrillator 1.650
- Emergency bag pack 500
- Brother Label printer 0
- Food Saver 0
- Complete kitchen tools and pans 0
- Handheld depth finder 119
- Fortress Aluminium Anchor 110 (for big tender)
- Shore Spike with danish hook 160 (for big tender)
- Spectra towing bridle for big tender - 1.250
- Defense package - 1.500
- Spare Wifi Antenna plus Booster & Router 450
- Total: 19.961

Moonrise Specs

NEW or rebuild:

- Six (6) AGM Lifeline 8D batteries NEW 2016
- Separate Lifeline 8D starting battery - NEW 2017
- One (1) AGM Lifeline 8D Main Engine battery NEW 2017
- AC Pump NEW 2017
- Bow Thruster NEW 2017
- Anchor Chain 3/8 G4 HT 420 ft. NEW 2017
- Maxwell Chain wheel (Gypsy) for windlass NEW 2017
- Complete Maxwell 3500 anchorwinch rebuild 2017
- AIS Antenna NEW 2017
- Injectors Main Engine NEW 2017
- Injectors Generator NEW 2017
- Injectors Wing Engine NEW 2017
- Salt Water Pump from Generator NEW 2016
- Fuel Injector Pump Generator NEW 2016
- Cockpit Shower NEW 2017
- Hailer NEW 2017
- All Racor housings rebuild 2017
- Shore Power Cable 50Amp 60ft - NEW 2017
- Stabilizer complete rebuild 2017
- Big Service Honda 50 HP 2017
- Cap Rail Varnish NEW 2017
- Furuno Chartplotter 1870F for Dinghy NEW 2015
- Village Marine Water Maker Updates and NEW Membranes NEW 2015
- UV Sterilizer Rebuild and new UV Lamp NEW 2017
- NEW bottom paint and prop speed 3/2017
- Hull and superstructure polished and waxed 9/2017

***Engine Hour notes from Bob Senter**

Don't confuse Nordhavn's with the average white boat you see for sale. None of the same rules apply. Continuous duty rated engines, for example, are only used on commercial vessels and Nordhavn's.

That means that they could have an expected life of somewhere between 20,000 and 40,000 hours and are designed to be overhauled to new in the hull economically. Virtually, all the components you find in a Nordhavn were the best of the breed at the time the boat was built.

The most difficult thing for most buyers to understand is that when you find a high hour boat, it must have been continuously maintained in order to remain in top quality, so you've found a jewel. A low hour boat can appear cosmetically excellent but hide a multitude of hidden issues, most of which are directly connected to seawater or corrosion eating up expensive stuff you can't see. But, you will absolutely pay for it after the purchase, usually one frustrating surprise at a time.

You don't need to worry about high hours on Northern Lights generators or Lugger propulsion engines that get broken in around 5000 hours. I have seen a few engines killed by negligence or seawater intrusion but none that actually wore out in a Nordhavn. The John Deers are also good.

Finally, all used boats have some cosmetic opportunities both external and internal but it is part of buying a used boat.

Bob Senter
Northern Lights/Lugger Service Training.

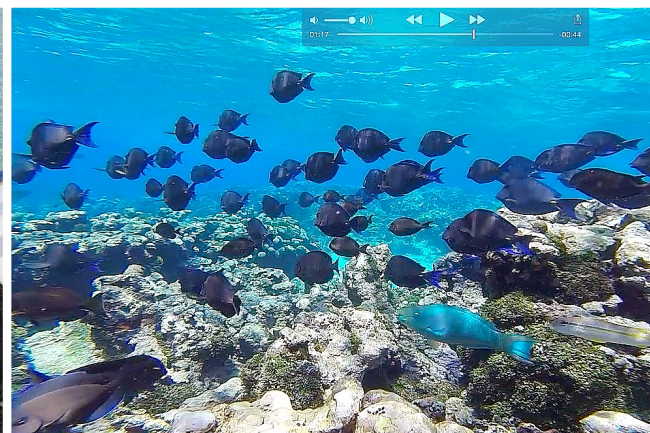
Fun with Moonrise

A white motorboat is shown from a low angle, partially submerged in clear, turquoise water. The boat's upper deck and cabin are visible above the surface, while the lower hull and a large, textured orange starfish are visible below. The sky is bright blue with scattered white clouds. The overall scene conveys a sense of adventure and outdoor recreation.

You can go anywhere.
Your range is about 3,500
nautical miles.

Exploring, diving, snorkeling, fishing

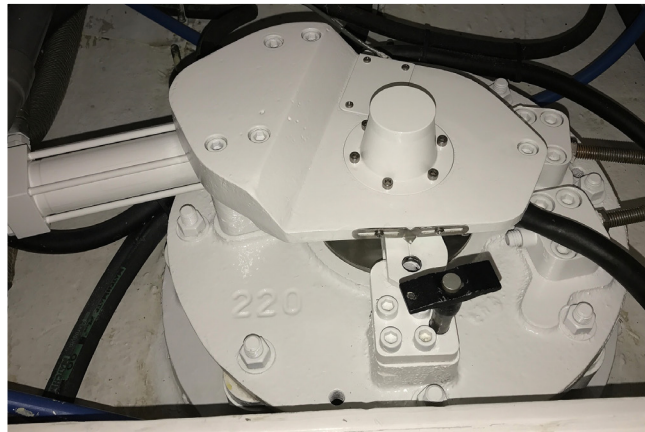
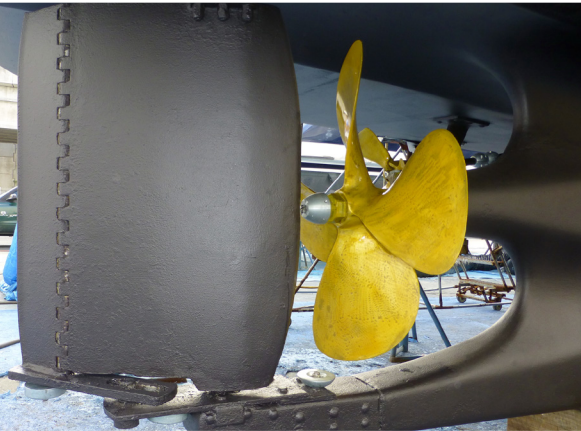
Fun with Moonrise



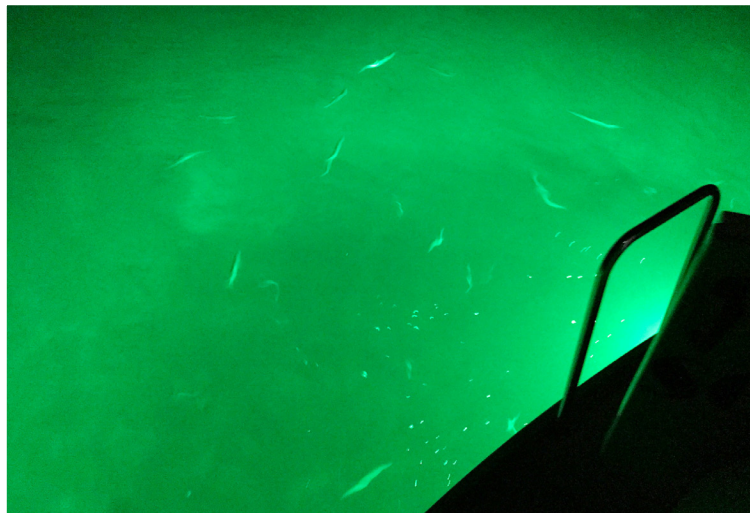
Fun with Moonrise



Specials



Optional





contact: Moonrise@Nordhavn-Yachts.com
www.Nordhavn-Yachts.com